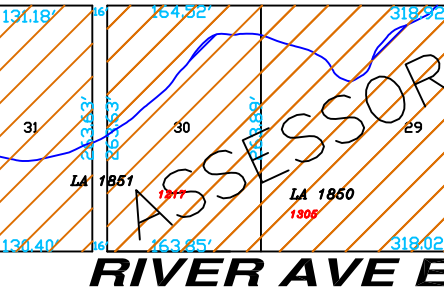
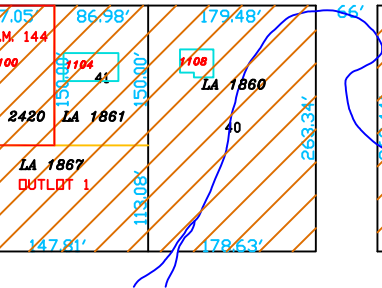
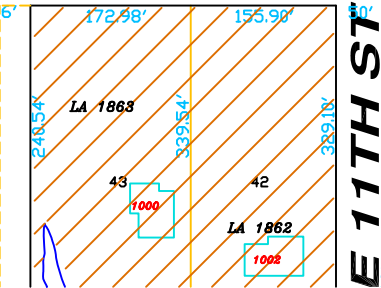
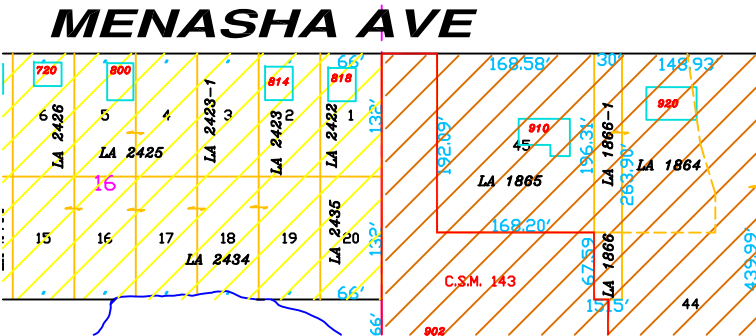


Note: This map is as accurate as the public records from which it was prepared, and is limited to the quality of the data used; It is not intended to be a substitute for an actual field survey. For more information on parcels within the county, contact the

Surveyor / Land Information Office located at the County Courthouse 311 Miner Ave. E. suite 121 Ladysmith, Wisconsin 54848



RIVER AVE E